



THE LINCOLN LETTER

THE NEWSLETTER OF THE NATIONAL LINCOLN SHEEP BREEDERS ASSOCIATION

Fall 2017

LETTER FROM THE PRESIDENT

In this issue:

President's Letter	1
Election Results	1
APHIS Scraps Scrapie Tags	2
Livestock Conservancy	3
NSIP: More than Meets the Eye	4
Twist of Fate Spinnery	5
Lincoln Wool for Felting	7
Maryland Sheep & Wool Festival	9
National Lincoln Sale Report	14
All-American Junior Show Results	17
Illinois State Fair	17
Maryland State Fair	18
Big E Results	20
New Jersey State Fair	20

It is hard to believe we are nearing the end of yet another show season with NAILE right around the corner, but here we are! The Maryland Sheep and Wool Festival and the National Show and Sale in Wooster both realized healthy returns in sales while the Northeast Regional Show held in Springfield, MA saw 135 high quality animals go through the show ring. All in all, I would say it has been quite a year for Lincolns.

As we move toward and into the New Year, the Board will be working on achieving several new goals, the first being realized in the form of a newsletter. We have contracted with Tiffany Deakin to publish three editions of THE LINCOLN LETTER, this being the first. Anyone interested in advertising in the upcoming newsletters should contact Tiffany.

Along with the usual business of putting a budget together and

holding quarterly teleconferences, we will be working on revising the Bylaws as well. Also, for tax purposes, we will now be issuing receipts for donations and sponsorships. We will also be asking for a form to be used with receipts attached when requesting any reimbursements. Again, this is all in an effort to maintain accountability as well as transparency.

One more goal we hope to achieve is to have all membership dues paid by March 1st so that an updated/current membership directory will be available at the beginning of show and sale season. Thank you all for being part of such a great community of Lincoln breeders. With the hard work and dedication of both our board and membership we can keep this breed growing strong.

- Robin Meek

2017 ELECTION RESULTS

Thank you to everyone who participated in the election this summer. We received 51 ballots and the results are as follows:

President: Robin Meek, Bally Duff Farm, RI
Vice President: Emmaline Long, Orchard View Farm, NY
Secretary/Treasurer: Deborah Vanderwende, Locust Grove Farm, DE
East/Midwest Director: Diane Klingelhofer, Liberty Farms, MD
West Coast Director: Christiane Payton, North Valley Farm, OR

Membership also voted to allow yearling ewes to be nominated for the futurity program. This will take effect for the 2018 show season.

For a complete list of directors and contact information, see Page 2.

If you have any ideas for articles in future issues, email Tiffany Deakin at tdeakin93@gmail.com.

**Contact Information
for the National
Lincoln Breeder's
Association**

Robin Meek, President
96 Farnum Rd.
Harmony, RI 02839
(401) 949-2167
ballydufffarm@yahoo.com

**Emmaline Long,
Vice President**
7617 S. Lake Rd.
Bergen, NY 14416
(585) 813-7228
ealong88@gmail.com

**Debbie Vanderwende,
Secretary/Treasurer**
14391 Blanchard Rd.
Greenwood, DE 19950
(302) 349-4240
lincolnfleece@gmail.com

**Lori Shea,
Eastern Director**
PO Box 378
Columbus, NJ 08022
(609) 291-0635
chefhale@comcast.net

**Diane Klingelhofer,
East Midwest Director**
4023 Wards Chapel Rd.
Marriottsville, MD 21104
(410) 655-7577
mslincolnsheep@aol.com

**David Day,
Illinois/Indiana
Director**
19860 Creek Rd.
Noblesville, IN 46060
(317) 727-7793
drdcreek@gmail.com

**Eric Froehlich,
West Midwest Director**
1202 Pokegama Lake Rd.
Grasston, MN 55030
(612) 804-0987
froehlichfarms@
eksheep.com

**Christiane Payton,
West Coast Director**
12775 NW Oak Ridge Rd.
Yamhill, OR 97148
(503) 662-4249
Christiane@
northvalleyfarm.com

**Tiffany Deakin,
Newsletter Editor**
P.O. Box 500
Cuba, IL 61427
(309) 338-8372
tdeakin93@gmail.com

www.lincolnsheep.org

APHIS NO LONGER PROVIDING FREE PLASTIC SCRAPIE TAGS

To support animal disease traceability and scrapie eradication efforts, the United States Department of Agriculture's Animal and Plant Health Inspection Service has provided both metal and plastic ear tags and applicators to sheep and goat producers – at no cost – since fiscal year 2002.

After a funding reduction in FY 2012, APHIS used specific, no-year funding (for scrapie and ADT) to continue purchasing the tags and distributing them free of cost to producers. These no-year funds were exhausted in fiscal year 2017. While the Agency remains committed to ADT efforts, beginning Oct. 1 of this year, APHIS is providing only metal tags free of charge to producers and others who handle sheep and goats. Plastic tags and applicators for metal and plastic tags will remain available for purchase directly from approved tag manufactures.

These changes will reduce APHIS tag and applicator costs while still providing sheep and

goat producers with a free identification device. APHIS will provide a limited number of plastic tags to producers newly enrolled in the Scrapie Free Flock Certification Program who submit tissues for scrapie surveillance in order to encourage on-farm scrapie surveillance.

The agency will continue to work closely in partnership with states and industry to achieve scrapie eradication.

For more information on how to purchase tags and applicators, visit <https://www.aphis.usda.gov/animalhealth/scrapie-tags>.

Note: The American Sheep Industry Association and other stakeholder groups continue to work with USDA on alternatives to this new policy, including increasing the appropriations designated to the scrapie eradication program.

LETTER FROM THE EDITOR

On behalf of Banner Publications and myself, it is with great excitement I present you with this issue of *The Lincoln Letter*. I feel honored you have placed your trust in me to publish your newsletter three times a year, and to be a part of the growth and success of the Lincoln breed.

Banner Publications has been working in the purebred sheep industry since 1978, publishing what is now *The Banner Sheep Magazine*, an all-breeds sheep publication. I have been working at the Banner for a few years now, and have been around sheep my whole life.

Working for the Banner gives me the unique access to coverage of major sheep events from coast-to-coast, so I believe I will be able to provide Lincoln breeders expanded news about events affecting your breed.

Putting together this newsletter has been fun and enjoyable working with Lincoln breeders. I plan to keep in regular contact with you; your support of your breed journal will help promote not only your flock, but help promote the breed as well.

I invite you to let me know what is going on in your part of the country, and ask you for your help and suggestions to make your breed journal even better.

I look forward to getting to know you all at sheep events around the country.

Tiffany Deakin



Follow us on Facebook at <https://www.facebook.com/NLSBA/>
to stay current with news, shows, and events!

THE LIVESTOCK CONSERVANCY AND HERITAGE BREEDS OF LIVESTOCK AND POULTRY

BY: BRIAN LARSON
DOWLING, MI

The Livestock Conservancy (LC) is celebrating 40 years of preventing heritage livestock and poultry breed extinction. We believe that these breeds bring value to North American animal agriculture through their genetic diversity that may span hundred or thousands of years. It is a track record of conservation of 11 different species and nearly 200 different breeds.

The LC works to preserve breed character by encouraging strong breed standards, by working closely with over 150 breed associations, founded seven breed associations, partnering with the USDA Germplasm program to identify valuable genetics for preservation, managing breed stud books, conducting annual surveys to track breed populations and identifying those that may need help in preservation, partnering in scientific research that furthers our understanding of heritage breeds, working with high value genetic flocks and herds in danger of being lost by finding good homes with competent breeders.

The LC holds an annual conference at locations around the country to educate, promote and share information about our heritage breeds. They have an active program with returning military veterans that are interested in beginning in animal enterprises.

There are many success stories over the 40 years. One of the early efforts was to locate and gather true Texas Longhorn cattle that had not been crossed with other breeds. It was an effort led by dedicated Texas and Mexican cattlemen and supported by the LC. the term 'landrace breeds' applies to livestock that had been developed to survive and thrive in particular environments. There has never been a breed lost to extinction that has been on the Conservation Priority list.

Examples of landrace breeds that have been identified and preserved with support of the LC include Santa Cruz Island sheep,

Florida Cracker cattle, Hog Island sheep, Pinewoods cattle, Marsh Tacky horses, Gulf Coast sheep, Randall Lineback cattle, San Clemente goats, Colonial

Spanish, Choctaw and Wilbur Cruce horses, Red Wattle, Ossabaw, Mulefoot and Guinea hogs, Cotton Patch Geese and all heritage turkey breeds. Currently the LC is monitoring a wild population of sheep on federal lands in Hawaii that descended from those brought there by Captain Cook.


The Livestock Conservancy has an excellent international reputation where the Food & Agriculture Organization (FAO) of the United Nations and global conservation groups around the world turn to the LC for information on global breeds.

The Lincoln Longwool breed is categorized as 'threatened' on the Conservation Priority List. This means that there are fewer than 1,000 annual registrations in the US and a global population less than 5,000. The breed currently is based primarily in the US and UK, while South American, New Zealand and Australian numbers have plummeted in the last decade. It will take dedication by the US and UK Lincoln Longwool breeders to make sound decisions in their breeding programs. Furthermore, breed-specific marketing of meat and fiber will be a necessity to keeping the breed viable. The Livestock Conservancy is committed to helping in any way to further the viability of the Lincoln breed.

Visit www.livestockconservancy.org to learn more and to find out how to become a member.



Du Bray Lincoln Farm
Registered White & Natural Colored Lincolns
Lambs, Breeding Stock & Fleeces



Bill, Diane & Chris Du Bray
22440 SE 419th Street
Enumclaw, WA 98022
sheepone@msn.com ▪ (360) 825- 1634

Sand Hill Farm

White & Natural Colored Lincolns

Greg & Eileen Hordyk
9906 Arlington Heights Road
Arlington, WA 98223
(425)299-8275 ghordyk@comcast.net

Give us a call today!

Fleeces and Lambs for Sale at the Farm

Advertising Rates

DISPLAY ADS

1 PAGE AD

\$75 for one
\$200 for three prepaid

1/2 PAGE AD

\$45 for one
\$125 for three prepaid

1/4 PAGE AD

\$25 for one
\$70 for three prepaid

1/8 PAGE AD

(Business Card)
\$15 for one
\$40 for three prepaid

NEWSLETTER DEADLINES

WINTER

January 15
Print Date: February 1

SPRING/SUMMER

April 15
Print Date: May 1

FALL

October 20
Print Date: November 1

Send Ads & Articles to:

Tiffany Deakin,
Newsletter Editor
P.O. Box 500
Cuba, IL 61427
(309) 338-8372
tdeakin93@gmail.com

Send Ad Payments to:
Debbie Vanderwende,
Secretary/Treasurer
14391 Blanchard Rd.
Greenwood, DE 19950
(302) 349-4240
lincolnfleece@gmail.com

NSIP: MORE THAN MEETS THE EYE

BY: HARVEY WARRICK
ADRIAN, MI

On the average, most breeders select rams that "look like" they will improve the next generation. This practice has gone on for decades. Some might even wonder what has been the long term result of this practice. During that time, the total pounds of sheep meat produced in the U.S. has declined. The results also closely followed the sheep numbers in the U.S. Over the same period, the total pounds of beef produced in our country has grown to an all-time high, while cattle numbers have dropped to an all-time low. This trend might even make some wonder, has the time come to investigate WHY?

To learn more about this concept, at the invitation of the National Sheep Improvement Program (NSIP), I traveled with many representatives from the major breed associations to Coalville, Utah in October for a hands-on exercise in selecting terminal sires most likely to increase pounds of lamb per ewe in the next lamb crop. Participants were asked to place four rams they would select to improve the lamb crop. As more NSIP performance information was given, the

placing changed. The best looking ram was no longer the pick based on the expected results from the records.

The program is currently testing an experiment designed to identify and follow the lambs from each of 25 rams exposed to a band of 1000 ewes.

Lambs will be followed through the feedlot to the rail...The major cuts will be measured by a new machine at Superior plants. The equipment, which gives each carcass a value, is still being tested but will soon to be ready to go online. In the future, this process may allow producers to be paid for carcass quality. Pounds of lamb produced per ewe will increase. This experiment will also be used to validate the predictions of EBV assigned by NSIP.

You might want to consider what potential this has for the Lincoln breed which certainly has a place on the material side in commercial flocks. For more information about this event and how NSIP can influence production, please feel free to give me a call at 517-438-0038.



Jeff & Robin Meek
P.O. Box 473
Harmony, RI 02829
401-949-2167

BACK ISSUES OF
THE LINCOLN LETTER ARE
AVAILABLE ONLINE AT
LINCOLNSHEEP.ORG

CAMPBELL
FAMILY FARM

It's more than a family business!

**HIGH-QUALITY
SHOW AND
BREEDING SHEEP**

FOR SALE NOW

Joe, Bridget, Brady and Blake Campbell
(740) 984-8769 | (740) 434-3251
Waterford, Ohio

A LOOK AT TWIST OF FATE SPINNERY

BY RICK TROJANOWSKI & JEREMIAH SQUIER
PORTLAND, CT

It was a twist of fate that led us to the wool processing business. In 2004, we stumbled across an article about Belfast Mini-mills, a company that manufactured small scale fiber processing equipment for the cottage industry. Prior to finding out about them, the only way to get into the business was to purchase an old, large fiber mill and scale it down as much as possible, which still left you with equipment that was of a scale too large for our needs.

The wool market in the northeast was non-existent at the time and we felt that a small scale wool mill would not only benefit us personally, but could also help other producers in the area, too. Our facility has the capability to produce batts or roving for hand spinners and felters, as well as



sheets of felt and yarns of many weights for those wishing to have a more finished product. New this year, we will also be offering finished socks for our clients.

People don't realize the many steps needed to make a yarn. The wool must first be skirted and scoured. Wools are washed at a temperature of 180 degrees. The process

takes three hours with two wash cycles and three rinse cycles. Minimal agitation is used in the scouring process so as not to felt the wool. After scouring, the wool is moved to racks for air drying; it takes 24 to 48 hours to dry the wool depending on the weather and the fineness of the fibers.

Once the fleece is dry, it moves to the picker; this machine combs through the fleece to break up the locks. After picking the fleece, an anti-static agent is applied to the fiber and it rests for a minimum of one hour before moving on to the carding process.

The carding machine has a series of drums. The worker drums comb through the fibers and align them, and the stripper drums remove the fiber from one worker and move it onto the next for further alignment. At the end of the process the web that comes off the carding machine can either be consolidated into a roving or collected on a drum to form a batt. The batts can be further processed into felt sheets or are ready for use by felters and quilters. Roving at this point is ready for the hand spinner to use.

If you wish to have your fleece made into yarn, the process continues at the draw frame. This machine blends two of the roving together and stretches them out to form a thinner product called a sliver. The sliver proceeds to the spinning frame where it is drawn out even thinner and twisted into a single ply yarn. The single ply yarns are then moved to the plying machine where two or more are twisted

WE WANT YOU... TO BE A JUNIOR SHOW SPONSOR!

It's not too late to sponsor a class at the North American International Livestock Expo in Kentucky!



STILL AVAILABLE:

Champions – ram & ewe, both black & white – \$80 each class

– they will receive a chair, 2ft trough and an embroidered halter

Reserves – ram & ewe, both black & white – \$60 each class

– they will receive a picture frame, 1 ft trough, and an embroidered halter

Pairs of yearling ewes & ewe lambs, black & white – \$65 each class

– they will receive an embroidered UnderArmor bag and a 2ft trough

The young flock for both blacks & whites – \$55 each class

– they will receive a three ft trough, and a \$25 dollar gift certificate

Please let Mindy know what class you would like to sponsor. We are looking for support to be able to continue to offer these junior awards.

The donations may be mailed to her at:
Mindy Reid
11152 Reid Rd
Houston, MO 65333

Contact Mindy with questions at
wyncrest2003@yahoo.com
Please make checks to
NLBSA

Thank you in advance for supporting our junior members!

A TWIST OF FATE CONTINUED...

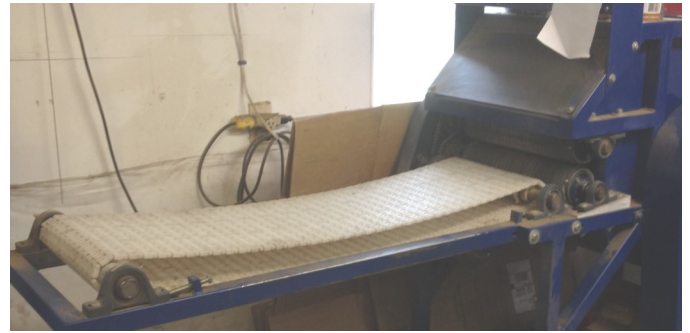
together to produce a plied yarn that will have a more consistent finished look and be much stronger than the single ply yarn. Because wool is a natural fiber, it has a memory and wishes to revert back to its natural state. To overcome this, the yarn must now be steamed to set the twist. Once set and dried again, the yarn is ready to be put into skeins. We normally put the yarn up in 4-ounce skeins with varying yardage depending on the weight of the yarn. For example, a worsted weight yarn has 250 yards to the skein, while a bulky weight yarn is only 150 yards to the 4-ounce skein.

When we first acquired the mill, we anticipated processing our own wool and the wool of other small scale sheep producers in the area. We quickly found out that not only sheep producers were interested in our

custom processing services, but also llama and alpaca producers, too. We are always up for the challenge and have processed fibers such as dog, bison, yak, mohair, cashmere, and even raccoon. We did however draw the line at skunk.

Twist Of Fate Spinnery and Supply has expanded its services and offers an array of products for fitting and showing and also offers sharpening services. The mill is located in Portland, CT and the supply trailer travels to shows around the northeast. Visitors are always welcome, so if you ever find yourself in Connecticut please give Rick a call at 860/759-9334 or visit us online at our website www.twistoffatespinnery.com.

The three photos below show various pieces of equipment used at Twist of Fate Spinnery, LLP to process fiber.



With **Sydell** *You Can See...*

CLEMSON UNIV.

**The Light
at the End
of the Tunnel for
Your Sheep/Goat
Equipment Needs!**

Sydell Inc., 46935 SD Hwy 50, Burbank, SD 57010
Phone: (605) 624 - 4538 Toll Free: 1-800-842-1369
Website: www.sydell.com Email: sydell@sydell.com

CALL AHEAD FOR
FREE DELIVERY TO
SHOWS

LINCOLN WOOL FOR FELTING

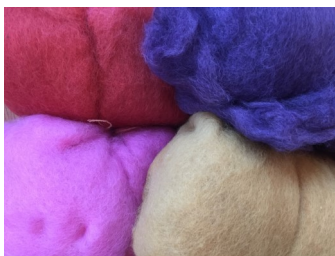
BY: CHRISTIANE PAYTON, NORTH VALLEY FARM
YAMHILL, OR

I am sure that I am not the only shepherd who has had fleece felt on one of my Lincoln sheep. We raise Lincolns in the Willamette Valley of western Oregon - this past year we had the rainiest winter on record followed by the third driest summer since 1885. Those swings in extremes, from cool and wet to hot and dry can cause a fleece to felt on the animal. In the spirit of making lemonade out of lemons, I decided to see whether the ability of Lincoln fibers to bind together on the animal could be manipulated to make felt when I decided the time was right.

I started out with first clip Lincoln lamb from white animals. Note: natural colored wool overdyes beautifully, however in this case I knew that I was going to be working with some colors - yellows and reds- that I find go best with white fiber. As a fiber arts enthusiast, I've always tried to keep the handle and luster in my Lincoln flock in line with the standard - high luster and silky handle with a reasonably broad lock structure. Any finer, more curly or purred and we are in Border Leicester territory - a nice fleece, but not a traditional Lincoln. The same goes for weight - even the breed's lamb fleeces, while not as heavy as adult Lincoln, have some heft and drape to them, factors which affect the handle of the end product.



Our lambs are born in February and they are sheared by the end of June which means they have about 4 months of fleece on them which equates to a lock length of between 3 and 4" at the time of shearing. This is a great length for most commercial mills, many of which are unable to handle fiber length in excess of 5" as it wraps around the drums of their carders.



After the lambs are shorn, I sort through the fleeces and set aside some good quality wool for sending off to make felting batts. I select for both luster and handle as I want the felt to be smooth and shiny. After a good skirting, I wash the wool, 15 lbs. at a time, in a large basin in our basement. I use very hot water together with ample amounts of soap - either Dawn (it does cut the grease!) or Unicorn wool wash. In my experience the advantage of the Unicorn product is that there are less suds which means fewer rinses and/or less vinegar in the rinses. In any case, my aim is to get the wool as clean as possible in advance of the next step - dyeing.

I've been dyeing wool for many years and have used both synthetic as well as natural dyes with success. For this project, I used natural dyes on my washed Lincoln lamb. Natural dyes come in many forms, from raw products (such as bark chips or even beetles) to extracts in the form of powders or liquids. In this case, I chose to use extracts from Earth Hues as I find that they are easy to use, leave no residues as well as create results which can be repeated. I placed 10 lbs. of washed Lincoln lamb wool into a large canning pot, soaked it in water and then followed the dyeing instructions for working with cochineal, weld, madder and logwood so I would get a rusty red (madder) pink (cochineal) purple (logwood) and yellow (weld.)

Once the dye had been thoroughly absorbed into the fiber, I allowed the contents of the pot to cool off. After a few rinses the dyed wool was put out in the sun to dry and then brought to our local fiber mill for processing into batts that weigh about 1 lb per batt. I've been very pleased with the result - sparkling Lincoln lamb batts in a fun range of colors! As a simple test to see whether the fiber will felt, one can take a small handful of the wool and rub it gently between one's palms - in my experience Lincoln felts quite easily with just a little agitation - something my sheep and I can agree on! In the next newsletter, I will share some of the Lincoln lamb batt felt creations. In the mean time, I hope that you, your families and your Lincoln sheep enjoy these cooler days of autumn.



For full color photos, view the .pdf version of the newsletter on our website.

LOCUST GROVE LINCOLNS

White & Natural Colored Lincolns

*We raise elite dual-purpose Lincolns.
We're your source in the Northeast for both breeding
stock & fleeces.*

Contact us to plan a visit today!

Debbie Vanderwende
14391 Blanchard Road
Greenwood, DE 19950
(302) 349-4240 lincolnfleece@gmail.com



Specializing in both white and natural Lincoln fleeces
with some Wensleydales on the farm, too!

Give me a call for all your Lincoln needs!

LINCOLNS IN THE LEAD!

OUR BREEDERS HAVE HAD A SUCCESSFUL SHOW SEASON ACROSS THE NATION!



A huge congratulations to Blake Campbell on winning Premier Exhibitor in the Natural Colored Show at the 2017 Ohio State Fair with his flock of Lincoln Sheep!



Another big congratulations to Wind Valley Farm on their Supreme Champion Fleece at the 2017 New Jersey State Fair.



Congratulations to Beverly Boersma for Supreme Champion Ewe over all breeds at the 2017 Big E! Not only did the White Ewe win, the Natural Colored Ewe was also part of the top 5!



Diane Klingelhofer (Liberty Farms) won Supreme Ewe overall at the Maryland Sheep and Wool Festival with her white yearling ewe. For all three supreme drives (ram, ewe, fleece) both the white and natural colored Lincolns were pulled out to the top 7!



Kris Jones (OR) won Supreme Champion fleece in the fleece show at Crook County Fair in OR.

SEND PICTURES OF YOUR WINNING LINCOLNS TO TDEAKIN93@GMAIL.COM TO BE FEATURED IN THE LINCOLN LETTER



Christine Cole from Sisters, Oregon won Supreme Champion Wool Breed Ewe at Deschutes County Fair, OR.

2017 MARYLAND SHEEP & WOOL FESTIVAL

MAY 6 & 7, 2017
WEST FRIENDSHIP, MD

YEARLING RAM – 1) Taylor Garges, Telford, PA; 2) Locust Grove Farm, Deborah Vanderwende, Greenwood, DE; 3) & 5) Liberty Farms, Diane Klingelhofer, Marriottsville, MD; 4) Chaotic Farm, Alison Ungar, Medina, OH

SENIOR RAM LAMB – 1) Liberty Farms, Diane Klingelhofer, Marriottsville, MD

JUNIOR RAM LAMB – 1) Liberty Farms, Diane Klingelhofer, Marriottsville, MD; 2) & 3) Locust Grove Farm, Deborah Vanderwende, Greenwood, DE

PAIR OF RAM LAMBS – 1) Liberty Farms, Diane Klingelhofer, Marriottsville, MD; 2) Locust Grove Farm, Deborah Vanderwende, Greenwood, DE

CHAMPION RAM – Taylor Garges, Telford, PA

RESERVE CHAMPION RAM – Liberty Farms, Diane Klingelhofer, Marriottsville, MD

YEARLING EWE – 1) Liberty Farms, Diane Klingelhofer, Marriottsville, MD; 2) Creek Road

WHITE LINCOLN SHOW

Farms, Thomas & Chris Day, Greenfield, IN; 3) Locust Grove Farm, Deborah Vanderwende, Greenwood, DE; 4) Taylor Garges, Telford, PA; 5) Chaotic Farm, Alison Ungar, Medina, OH

PAIR OF YEARLING EWES – 1) Liberty Farms, Diane Klingelhofer, Marriottsville, MD; 2) Creek Road Farms, Thomas & Chris Day, Greenfield, IN; 3) Locust Grove Farm, Deborah Vanderwende, Greenwood, DE; 4) Taylor Garges, Telford, PA

SENIOR EWE LAMB – 1) Liberty Farms, Diane Klingelhofer, Marriottsville, MD

JUNIOR EWE LAMB – 1) & 3) Liberty Farms, Diane Klingelhofer, Marriottsville, MD; 2) & 4) Locust Grove Farm, Deborah Vanderwende, Greenwood, DE

PAIR OF EWE LAMBS – 1) Liberty Farms, Diane Klingelhofer, Marriottsville, MD; 2) Locust Grove Farm, Deborah Vanderwende,

Locust Grove Farm, Deborah Vanderwende, Greenwood, DE

CHAMPION EWE – Liberty Farms, Diane Klingelhofer, Marriottsville, MD

RESERVE CHAMPION EWE – Liberty Farms, Diane Klingelhofer, Marriottsville, MD

FLOCK – 1) Liberty Farms, Diane Klingelhofer, Marriottsville, MD; 2) Locust Grove Farm, Deborah Vanderwende, Greenwood, DE

BEST FLEECE – Liberty Farms, Diane Klingelhofer, Marriottsville, MD

PREMIER EXHIBITOR – Liberty Farms, Diane Klingelhofer, Marriottsville, MD

WE'RE STILL SEEKING SPONSORS FOR 2018 EVENTS!
CONTACT MINDY REID AT WYNCREST2003@YAHOO.COM TO GET INVOLVED!

Liberty Farms



We had another great year at the Maryland Sheep & Wool Festival!

SUPREME CHAMPION EWE

We also had Reserve Champion Lincoln Ram and Ewe, Reserve Champion Colored Lincoln Ram, and were both Premier Exhibitors!

We will also be in Louisville!

Fall lambs are on the ground - call today!

Diane Klingelhofer

4023 Wards Chapel Road • Marriottsville, MD 21104 • Phone: 443/277-8109 • Email: mslincolnsheep@aol.com

2017 MARYLAND SHEEP & WOOL FESTIVAL SHOW

MAY 6 & 7, 2017
WEST FRIENDSHIP, MD

YEARLING RAM – 1) Creek Road Farms, Thomas & Chris Day, Greenfield, IN; 2) & 3) Liberty Farms, Diane Klingelhofer, Marriottsville, MD; 4) WD Ranch, Elaine Moore, Taneytown, MD; 5) Chaotic Farm, Alison Ungar, Medina, OH

SENIOR RAM LAMB – 1) Liberty Farms, Diane Klingelhofer, Marriottsville, MD

JUNIOR RAM LAMB – 1) Creek Road Farms, Thomas & Chris Day, Greenfield, IN; 2) Liberty Farms, Diane Klingelhofer, Marriottsville, MD; 3) & 5) Orchard View Farm, Emmaline Long, Bergen, NY; 4) Richard Long, Bergen, NY

PAIR OF RAM LAMBS – 1) Orchard View Farm, Emmaline Long, Bergen, NY; 2) Liberty Farms, Diane Klingelhofer, Marriottsville, MD; 3) Locust Grove Farm,

**SUPREME CHAMPION EWE
OVER ALL BREEDS:
LIBERTY FARMS, DIANE
KLINGELHOFER,
MARRIOTTVILLE, MD
(WHITE LINCOLN)**

COLORED LINCOLN SHOW

Deborah Vanderwende, Greenwood, DE; 4) Richard Long, Bergen, NY

CHAMPION RAM – Creek Road Farms, Thomas & Chris Day, Greenfield, IN

RESERVE CHAMPION RAM – Liberty Farms, Diane Klingelhofer, Marriottsville, MD

YEARLING EWE – 1) Creek Road Farms, Thomas & Chris Day, Greenfield, IN; 2) & 3) Liberty Farms, Diane Klingelhofer, Marriottsville, MD; 4) Locust Grove Farm, Deborah Vanderwende, Greenwood, DE; 5) Orchard View Farm, Emmaline Long, Bergen, NY

PAIR OF YEARLING EWES – 1) Liberty Farms, Diane Klingelhofer, Marriottsville, MD; 2) Orchard View Farm, Emmaline Long, Bergen, NY; 3) Locust Grove Farm, Deborah Vanderwende, Greenwood, DE; 4) WD Ranch, Elaine Moore, Taneytown, MD; 5) Shea Brothers Lincolns, Lori Shea

SENIOR EWE LAMB – 1) & 2) Liberty Farms, Diane Klingelhofer, Marriottsville, MD

JUNIOR EWE LAMB – 1) Locust Grove

Farm, Deborah Vanderwende, Greenwood, DE; 2) & 5) Richard Long, Bergen, NY; 3) Orchard View Farm, Emmaline Long, Bergen, NY; 4) Liberty Farms, Diane Klingelhofer, Marriottsville, MD

PAIR OF EWE LAMBS – 1) Richard Long, Bergen, NY; 2) Orchard View Farm, Emmaline Long, Bergen, NY; 3) Locust Grove Farm, Deborah Vanderwende, Greenwood, DE; 4) Liberty Farms, Diane Klingelhofer, Marriottsville, MD

CHAMPION EWE – Creek Road Farms, Thomas & Chris Day, Greenfield, IN

RESERVE CHAMPION EWE – Locust Grove Farm, Deborah Vanderwende, Greenwood, DE

FLOCK – 1) Liberty Farms, Diane Klingelhofer, Marriottsville, MD; 2) Locust Grove Farm, Deborah Vanderwende, Greenwood, DE; 3) Orchard View Farm, Emmaline Long, Bergen, NY

BEST FLEECE – Creek Road Farms, Thomas & Chris Day, Greenfield, IN

PREMIER EXHIBITOR – Liberty Farms, Diane Klingelhofer, Marriottsville, MD

2017 MARYLAND SHEEP & WOOL FESTIVAL SALE

JUDGE: BRIAN FARIS, TX
AUCTIONEER: TERRY JACOBS, MD

4 LINCOLNS AVG \$1,012.50

The Maryland Sheep Festival All Breeds Sale was held in conjunction with the 44th Annual Maryland Sheep & Wool Festival on Friday evening, May 6. Numbers were up slightly from previous years, with a sale average slightly higher than

4 COLORED LINCOLNS AVG \$635.00

that of 2016, and \$200 higher than the 2015 average. Lincolns had the highest sale average of all breeds.

A Liberty Farms, MD, yearling was the Champion Ewe of the Lincoln sale, selling to Sophie & Ada Larson, WI, for \$850. Locust Grove, DE, won Reserve Champion Ewe with their runner up yearling, selling to J&D Piccola Fattoria for bid of \$1,350, making her the highest-selling animal in the sale. The third ewe in the yearling class from Chaotic Farm, OH, sold to Barbara Mullens, MD, for \$600. Liberty Farms, MD, sold the second-highest selling animal, a Lincoln spring ewe lamb, for \$1,250 to Annabelle Kruse, IL.

Liberty Farms, MD, topped the Natural Colored Lincoln division, winning Champion Ram, Champion Ewe, and Reserve Champion Ewe. Their Champion Ram was a yearling that sold for \$450 to Don Moore, MD. Locust Grove, DE, won the Reserve Champion Ram honors with their yearling that sold to Michelle Clafin, VT, for \$425.

Liberty Farms' Champion Ewe came from the fall ewe class and sold for \$1,200 to Thomas & Ashley Foster, MN. The Reserve Champion Ewe won the yearling class, selling for \$500 to Don Moore, MD, who then purchased the second place yearling for \$600 from Locust Grove, DE.

RHODE ISLAND SHEEP COOPERATIVE

Established 1949

Home of
RHODY WARM
Blankets



Warm never felt
so GOOD!

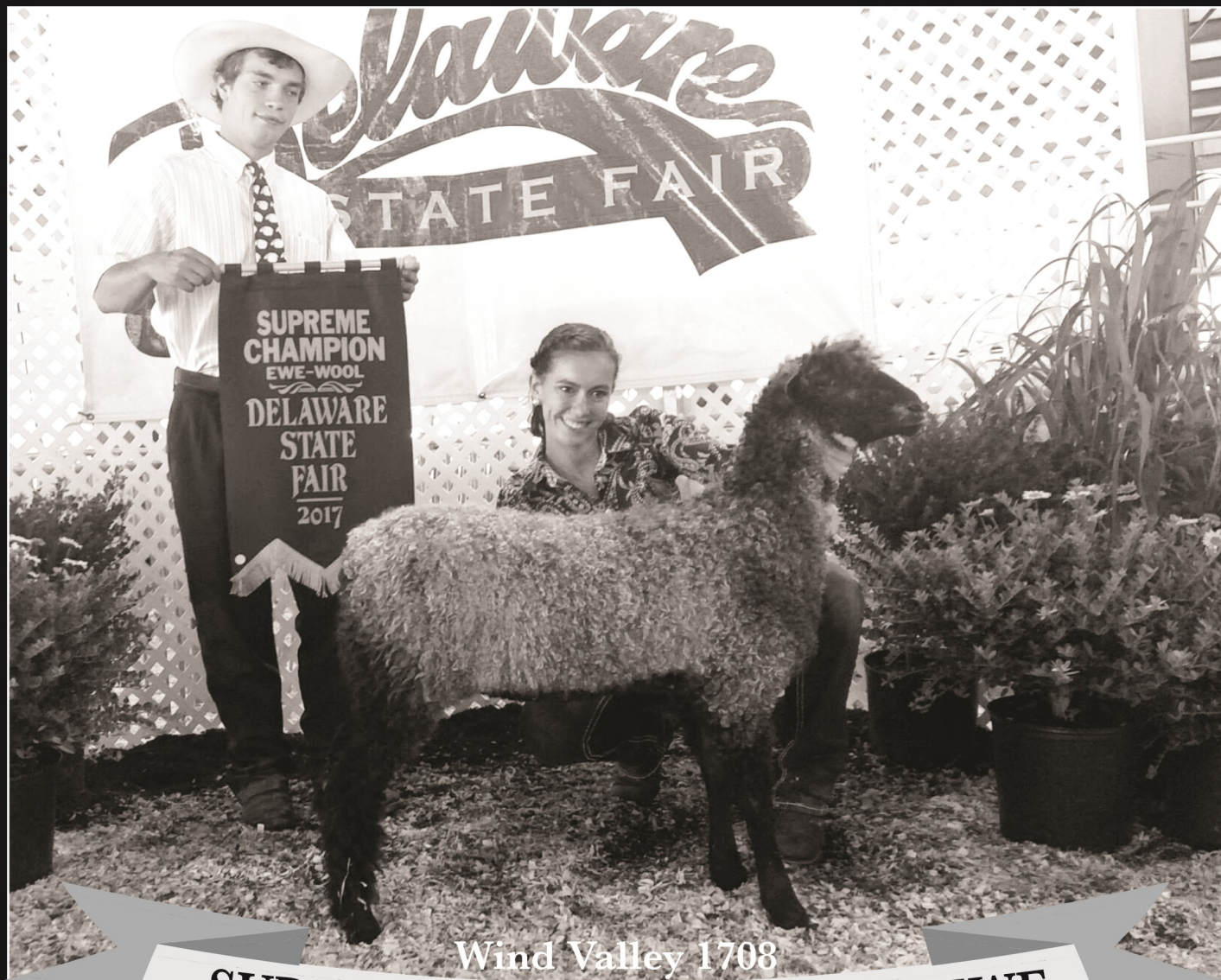
ORDER YOURS TODAY!

PO Box 88 • Harmony, Rhode Island 02829 • 401-578-2012

www.risheep.org

Berry Lincolns

A Growing Young Lincoln Flock!



Wind Valley 1708

SUPREME CHAMPION WOOL EWE

February Lamb • Delaware State Fair

BIG THANK YOU
to Darlene Leary & Debbie
Vanderwende for all your help
starting our Lincoln flock!

Lena also won Reserve
Champion Lincoln Ewe in the Jr.
Show with another Lincoln
February Ewe Lamb

Lena Berry & Family

2140 Jebb Road • Wyoming, DE 19934 • 302/632-0012 • lisa.berry@comcast.net

SUPREME CHAMPION EWE OVER ALL BREEDS The Big E - Week 2

**Big E -
The
World's
Largest
Lincoln
Show!**



**Our
Genetics
Work!**

**For Us
and
Others!**

Our Champion Ewe Lamb!



1st Place Flock



**Boersma's Grand
Champion Ram**
1st Place Yearling Ram
sold to Kathy Bombria, CT



Grand Champion Ewe
Oregon State Fair -
Congratulations to Andre
Anderson, CA on his Boersma
ewe lamb purchased at
the National Sale!

BOERSMA LINCOLNS

Beverly Boersma

"Designing Our Flock For The Future!"

Cell: 217/620-3601 · 72 Hank's Lane, Murphysboro, IL 62966

www.boersmakruselincolns.com

KRUSE FARMS

Lincolns Since 1959!

"Quality Without Question"

Leading the way at the Big E



Grand Champion Colored Lincoln Ewe
1st Place Class II Yearling Ewe



Reserve Grand Champion Colored Lincoln Ram
1st Place Junior Ram Lamb
Sold to Starks, ME



1st Place Natural Colored Flock



Junior Champion Ewe
Class I Jr. Ewe Lamb

KRUSE FARMS *Lincolns*

Steve Kruse: 217/433-5190

Jonathan & Annabelle Kruse: 217/994-1343

15056 N. Monocot St, Effingham, IL 62401

www.boersmakruselincolns.com

2017 NATIONAL LINCOLN SALE

MAY 27 & 28, 2017
GREAT LAKES SHOW & SALE IN WOOSTER, OH

LINCOLN

1 Yearling Ram	\$1,700.00
3 Spring Ram Lambs	\$400.00
5 Yearling Ewes	\$790.00
5 Spring Ewe Lambs	\$1,085.00
14 LINCOLNS	
AVERAGED	\$876.76

COLORED LINCOLN

6 February Ram Lambs	\$366.67
4 Yearling Ewes	\$1,062.50
1 Fall Ewe Lamb	\$450.00
1 January Ewe Lamb	\$1,000.00
4 February Ewe Lambs	\$775.00
2 March Ewe Lambs	\$575.00
18 COLORED LINCOLNS	
AVERAGED	\$675.00

The National Lincoln Sale was held in conjunction with the Great Lakes Sale. White Lincolns boasted the highest breed average at \$876.79, which was \$250 higher than their average at last year's sale. The Colored Lincolns doubled their entries, selling 18 head in the 2017 sale with a \$675 average, only modestly lower than last year's record average of \$716. White Lincolns sold first, followed by Colored Lincolns.

The National Champion Lincoln Ram was a yearling and high-selling white Lincoln, bred by Boersma Ranch, IL. Robert Sando & Family, OH, purchased the Champion for \$1,700. Rader's Lincolns, IL, won the Reserve National Champion honors with their spring ram lamb that sold for \$300 to

Ashtyn Anderson, MO.

Rader's Lincolns sold a second spring ram lamb to Robert Sando & Family, OH, for \$450, which is the same price Hammer Sheep, WI, received for their spring lamb from Bailey Towery, OH.

Boersma Ranch, IL, bred the National Champion Lincoln Ewe, a yearling that sold to Robert Sando & Family, OH, for \$1,500. Rader's Lincolns, IL, sold their Reserve Champion Ewe, a spring ewe lamb, for \$1,300 to Laurie Baughman, OH.

Back in the yearling class, Boersma Ranch sold a yearling to Kris Jones, OR, for \$900. Rader's Lincolns sold a pair of yearlings, one to Alison Ungar, OH, for \$600, and the other for \$500 to Laurie Baughman, OH, who then bought a Rader's Lincolns spring ewe lamb for \$1,100. Garges Girls Farm, PA, sold their yearling for \$450 to Melvin Stewart, OH. Boersma Ranch sold a ewe lamb to Andrew Anderson, CA, for \$1,025, and Liberty Farms, MD, sold a pair of ewe lambs for \$1,000 each to Thomas & Ashley Foster, MN.

The National Champion Natural Colored Lincoln Ram was won by Wyncrest, MO, with their February lamb that sold to Brittany Anderson, MO, for \$400. Kay Stadel, KS, bred the Reserve National Champion Ram, also a February lamb, that sold to Steve Mack, KS, for \$400.

Rader's Lincolns sold the third place lamb

to Wind Valley Farm, MA, for \$600. Breckenridge Farms, TN, sold two February rams, the first to Zaren Kerper, PA, for \$250 and the second to Annabelle Kruse, IL, for \$300. West Lincolns, NY, sold their lamb for \$250 to Mindy Reid, MO.

The National Champion Natural Colored Lincoln Ewe honors went to Kruse Farms, IL, on their yearling that was the high-selling Lincoln overall. She sold for \$2,000 to Mindy Reid, MO. Kruse Farms also bred the Reserve National Champion Ewe, a February ewe lamb that sold to Charles Marshall, IL, for \$900.

Breckenridge Farms, TN, sold a pair of yearling ewes to Annabelle Kruse, IL. The first went for \$1,050 and the second went for \$800. West Lincolns, NY, sold the final yearling ewe to Mindy Reid, MO, for \$400.

Breckenridge Farms sold a fall ewe lamb for \$450 to Lilburn Lincolns, OH. Laurie Baughman, OH, gave \$1,000 for a Liberty Farms, MD, January ewe lamb. Wyncrest sold the second and third place February ewes behind the Reserve Champion for \$900 each to Thomas & Ashley Foster, MN. Wool Away Farm, PA, sold their February ewe entry for \$400 to Zaren Kerper, PA. Liberty Farms sold a March ewe lamb for \$700 to Blake Campbell, OH, and Breckenridge Farms sold their entry in that class for \$450 to Annabelle Kruse, IL, to conclude the National Lincoln Sale.

ANNOUNCEMENT

HODDINOTT ACRES Is Expecting!

4 ewes have settled via LAI with semen collected in 1994 from a grandson of
Harvey's Casper

Kalli & Matt Hensley Harvey Warrick
Adrian, MI • 517/263-4167

Cold Comfort Farm Lincolns

Pat Taylor & Family

371 Pasture Lane • Murphysboro, Illinois 62966
(618) 684-4401

Registered White & Colored Lincoln Sheep

British, New Zealand
& Domestic
Bloodlines

Breeding Stock &
Locker Lambs

Washed Fleece In
Locks for Doll Hair
or Handspinning

Wyncrest Farms



"Essence"

2016 National Champion Ram at Louisville
and pulled in top 5 in Supreme Drive
2017 Supreme Champion Ram
Nebraska State Fair & Undefeated!

*Our Lincolns are
ALWAYS in
FASHION!*



"Secret"

Twin Sister to "Essence"!



"Wicked"

Reid 16-53

Our Lead Fall Ewe Lamb
Sired by "Guido".
"Wicked" is undefeated this year!



"Victoria" & "Secret"

Our Lead 2017 Yearling Ewes!

Line up your showing and breeding needs with us soon!

Mindy & Steve Reid • Houstonia, MO

Mindy's Cell: 660.281.1003 • Steve's Cell: 660.281.0739 • www.wyncrestfarms.com

2017 ALL-AMERICAN JUNIOR SHOW

JUNE 30—JULY 2, 2017
MADISON, WI

WHITE SENIOR RAM LAMB – 1) Tayler Garges, Telford, PA; 2) Blake Campbell, Waterford, OH; 3) Shane Pepich, Richland Center, WI; 4) Sophia Larson, Reedsburg, WI; 5) Bailey Towery, New Madison, OH

NATURAL COLORED SENIOR RAM LAMB – 1) Laurie Baughman, New Concord, OH; 2) Blake Campbell, Waterford, OH

WHITE JUNIOR RAM LAMB – 1) Blake Campbell, Waterford, OH; 2) Sophia Larson, Reedsburg, WI; 3) Tayler Garges, Telford, PA; 4) Shane Pepich, Richland Center, WI; 5) Laurie Baughman, New Concord, OH

NATURAL COLORED JUNIOR RAM LAMB – 1) Laurie Baughman, New Concord, OH; 2) Shane Pepich, Richland Center, WI; 3) Blake Campbell, Waterford, OH; 4) Rebecca Bader, DeForest, WI; 5) Braydn Starkenburg, DeForest, WI

GRAND CHAMPION RAM – Tayler Garges, Telford, PA (White Senior Ram Lamb)

RESERVE CHAMPION RAM – Laurie Baughman, New Concord, OH (Natural Colored Junior Ram Lamb)

WHITE YEARLING EWE – 1) & 3) Tayler Garges, Telford, PA; 3) Justin Taylor, Arlington, WI; 4) Shane Pepich, Richland Center, WI; 5) Blake Campbell, Waterford, OH

NATURAL COLORED YEARLING EWE – 1) & 4) Blake Campbell, Waterford, OH; 2) Justin Taylor,

Arlington, WI; 3) Rebecca Bader, DeForest, WI; 5) Shane Pepich, Richland Center, WI

PAIR OF YEARLING EWES – 1) Tayler Garges, Telford, PA; 2) Blake Campbell, Waterford, OH; 3) Justin Taylor, Arlington, WI; 4) Sophia Larson, Reedsburg, WI; 5) Shane Pepich, Richland Center, WI

WHITE SENIOR EWE LAMB – 1) Shane Pepich, Richland Center, WI; 2) Blake Campbell, Waterford, OH; 3) Laurie Baughman, New Concord, OH; 4) & 5) Tayler Garges, Telford, PA

NATURAL COLORED SENIOR EWE LAMB – 1) Justin Taylor, Arlington, WI; 2) Blake Campbell, Waterford, OH; 3) Laurie Baughman, New Concord, OH; 4) Rebecca Bader, DeForest, WI

WHITE JUNIOR EWE LAMB – 1) & 4) Tayler Garges, Telford, PA; 2) Laurie Baughman, New Concord, OH; 3) Shane Pepich, Richland Center, WI; 5) Sophia Larson, Reedsburg, WI

NATURAL COLORED JUNIOR EWE LAMB – 1) Laurie Baughman, New Concord, OH; 2) Blake Campbell, Waterford, OH; 3) & 5) Lena Berry, Wyoming, DE; 4) Rebecca Bader, DeForest, WI

PAIR OF EWE LAMBS – 1) Tayler Garges, Telford, PA; 2) Laurie Baughman, New Concord, OH; 3) Blake Campbell, Waterford, OH; 4) Shane Pepich, Richland Center, WI; 5) Lena Berry, Wyoming, DE

YOUNG FLOCK – 1) Tayler Garges, Telford, PA; 2) Laurie Baughman, New Concord, OH; 3) Sophia Larson, Reedsburg, WI; 4) Blake Campbell, Waterford, OH; 5) Shane Pepich, Richland Center, WI

BEST FOUR HEAD OF EWES – 1) Tayler Garges, Telford, PA; 2) Blake

Campbell, Waterford, OH; 3) Justin Taylor, Arlington, WI; 4) Shane Pepich, Richland Center, WI; 5) Sophia Larson, Reedsburg, WI

BEST FLEECE – 1) Justin Taylor, Arlington, WI

2017 NORTH EAST YOUTH SHEEP SHOW

JULY 13–16, 2017
WEST SPRINGFIELD, MA

YEARLING RAM – 1) Jakob Leary, Oakham, MA; 2) Oliver Bombria, Columbia, CT

JUNIOR RAM LAMB – 1) & 3) Terence Blake, Ludlow, MA; 2) Oliver Bombria, Columbia, CT

PAIR OF RAM LAMBS – 1) Terence Blake, Ludlow, MA

GRAND CHAMPION RAM – Jakob Leary, Oakham, MA (Yearling Ram)

RESERVE CHAMPION RAM – Oliver Bombria, Columbia, CT (Yearling Ram)

YEARLING EWE – 1) & 3) Jakob Leary, Oakham, MA; 2) Lydia Smith, Charlotte, VT

PAIR OF YEARLING EWES – 1) Jakob Leary, Oakham, MA

JUNIOR EWE LAMB – 1) Peter Priest, Ludlow, MA; 2) & 3) Jakob Leary, Oakham, MA; 4) Terence Blake, Ludlow, MA; 5) Kirin Asselin, Candia, NH

PAIR OF EWE LAMBS – 1) Jakob Leary, Oakham, MA; 2) Terence Blake, Ludlow, MA; 3) Kirin Asselin, Candia, NH

GRAND CHAMPION EWE – Peter Priest, Ludlow, MA (Junior Ewe Lamb)

RESERVE CHAMPION EWE – Jakob Leary, Oakham, MA (Yearling Ewe)

EXHIBITORS FLOCK – 1) Jakob Leary, Oakham, MA; 2) Terence Blake, Ludlow, MA

BEST FLEECE – 1) Lydia Smith, Charlotte, VT

CONGRATULATIONS TO PETER PRIEST FOR WINNING 1ST PLACE SHOWMANSHIP IN HIS AGE DIVISION AT THE AAJS!

FREY
LIVESTOCK SUPPLY

717-548-1351

Fritz & Nancy Frey

ffrey@freysupply.com Drumore, PA

www.freysupply.com

Blade Sharpening & Clipper Repair

This Month's Specials...



Buy A Lister Star And Get A Free Blade!

Lister Star Offer Honored Until: 1/15/17



2017 ILLINOIS STATE FAIR

AUGUST 9 – 19, 2017
SPRINGFIELD, IL

WHITE LINCOLN –

YEARLING RAM – 1) Mike Rader, Danvers, IL; 2) & 3) Beverly Boersma, Murphysboro, IL; 4) & 5) Jonathan Kruse, Effingham, IL

SENIOR RAM LAMB – 1) & 3) Beverly Boersma, Murphysboro, IL; 2) & 5) Mike Rader, Danvers, IL; 4) Jonathan Kruse, Effingham, IL

JUNIOR RAM LAMB – 1) & 2) Beverly Boersma, Murphysboro, IL; 3) & 5) Mike Rader, Danvers, IL; 4) Kate Henkel, El Paso, TX

PAIR OF RAM LAMBS – 1) Beverly Boersma, Murphysboro, IL; 2) Mike Rader, Danvers, IL; 3) Jonathan Kruse, Effingham, IL; 5) Kate Henkel, El Paso, TX

GRAND CHAMPION RAM – Mike Rader, Danvers, IL (Yearling Ram)

RESERVE GRAND CHAMPION RAM – Beverly Boersma, Murphysboro, IL

(Yearling Ram)

YEARLING EWE – 1) & 2) Joseph Gromacki, Fredonia, WI; 3) Beverly Boersma, Murphysboro, IL; 4) Mike Rader, Danvers, IL; 5) Jonathan Kruse, Effingham, IL

PAIR OF YEARLING EWES – 1) Joseph Gromacki, Fredonia, WI; 2) Beverly Boersma, Murphysboro, IL; 3) Mike Rader, Danvers, IL; 4) Jonathan Kruse, Effingham, IL

SENIOR EWE LAMB – 1) & 3) Beverly Boersma, Murphysboro, IL; 2) & 4) Mike Rader, Danvers, IL; 5) Jonathan Kruse, Effingham, IL

EARLY JUNIOR EWE LAMB – 1) & 5) Beverly Boersma, Murphysboro, IL; 2) & 3) Mike Rader, Danvers, IL; 4) Nikkole Sheppelman, Bloomington, IL

LATE JUNIOR EWE LAMB – 1) & 3) Mike Rader, Danvers, IL; 2) & 4) Beverly

Boersma, Murphysboro, IL; 5) Jonathan Kruse, Effingham, IL

PAIR OF EWE LAMBS – 1) Beverly Boersma, Murphysboro, IL; 2) Mike Rader, Danvers, IL; 3) Jonathan Kruse, Effingham, IL

GRAND CHAMPION EWE – Joseph Gromacki, Fredonia, WI (Yearling Ewe)

RESERVE GRAND CHAMPION EWE – Joseph Gromacki, Fredonia, WI (Yearling Ewe)

BEST FOUR HEAD – 1) Beverly Boersma, Murphysboro, IL; 2) Mike Rader, Danvers, IL; 3) Jonathan Kruse, Effingham, IL

YOUNG FLOCK – 1) Beverly Boersma, Murphysboro, IL; 2) Mike Rader, Danvers, IL; 3) Jonathan Kruse, Effingham, IL

PREMIERE EXHIBITOR – Beverly Boersma, Murphysboro, IL



WINTERGREEN HOLLOW LINCOLNS

We Love Our Lincolns!

**Our flock is rich in
Ram-Lin Acres bloodlines**

Give us a call to get great genetics like this!



**2nd Flock
2017 Wisconsin
State Fair**

**Champion at the
National Lincoln Sale
from Boersma Lincolns**

**Reserve Champion at
the 2016 Wisconsin
State Fair**

**Our Lead
Stud Ram**



Raquel, Sophie, and Ada Larson - Consultant: David Allen
S 3951 Grote Hill Rd • Reedsburg, WI 53959 • (H) 608/524-4786 • (C) 608/963-3819

2017 MARYLAND STATE FAIR

AUGUST 26 – SEPTEMBER 5, 2017
LUTHERVILLE-TIMONIUM, MD

Natural Colored Lincoln –

RAM UNDER 2 YEARS – 1) Diane Klingelhofer, MD; 2) Jelaine Moore, MD; 3) Brietta Latham, MD

EARLY JUNIOR RAM LAMB – 1) & 2) Jelaine Moore, MD

LATE JUNIOR RAM LAMB – 1) Amber Legore, MD

PAIR OF JUNIOR RAM LAMBS – 1) Jelaine Moore, MD

CHAMPION RAM – Diane Klingelhofer, MD

Reserve Champion Ram – Jelaine Moore, MD

EWES UNDER 2 YEARS – 1) & 4) Jelaine Moore, MD; 2) Lisa Berry, DE; 3) Amber Legore, MD; 5) Brietta Latham, MD

PAIR OF YEARLING EWES – 1) Jelaine Moore, MD; 2) Brietta Latham, MD

SENIOR EWE LAMB – 1) & 2) Jelaine Moore, MD

PAIR OF SENIOR EWE LAMBS – 1) Jelaine

Moore, MD

EARLY JUNIOR EWE LAMB – 1) & 4) Jelaine Moore, MD; 2) & 3) Lena Berry, DE

LATE JUNIOR EWE LAMB – 1) Jelaine Moore, MD; 2) & 4) Brietta Latham; 3) Kallan Latham; 5) Trennen Latham

PAIR OF JUNIOR EWE LAMBS – 1) Jelaine Moore, MD; 2) Lena Berry, DE; 3) Brietta Latham, MD

CHAMPION EWE – Jelaine Moore, MD
RESERVE CHAMPION EWE – Lisa Berry, MD

PAIR OF LAMBS, ANY AGE – 1) Jelaine Moore, MD

PEN OF 4 LAMBS – 1) Jelaine Moore, MD

EXHIBITORS YOUNG FLOCK – 1) Jelaine Moore, MD

FLOCK – 1) Jelaine Moore, MD

White Wool – Long Wool –

RAM UNDER 2 YEARS – 1) Allison Seyfert, MD; 2) Diane Klingelhofer, MD

SENIOR RAM LAMB – 1) Diane Klingelhofer, MD

EARLY JUNIOR RAM LAMB – 1) & 2) Tayler Garges, PA; 3) Diane Klingelhofer, MD

LATE JUNIOR RAM LAMB – 1) Tayler Garges, PA; 2) Kallan Latham, MD; 3) Diane Klingelhofer, MD

PAIR OF JUNIOR RAM LAMBS – 1) Tayler Garges, PA; 2) Diane Klingelhofer, MD

CHAMPION RAM – Tayler Garges, PA
RESERVE CHAMPION RAM – Allison Seyfert, MD

EWES UNDER 2 YEARS – 1) & 4) Diane Klingelhofer, MD; 2) & 3) Tayler Garges, PA; 5) Kallan Latham, MD

PAIR OF YEARLING EWES – 1) Tayler Garges, PA; 2) Diane Klingelhofer, MD

PAIR OF YEARLINGS – 1) Diane Klingelhofer, MD

SENIOR EWE LAMB – 1) Diane Klingelhofer, MD

EARLY JUNIOR EWE LAMB – 1) & 3) Tayler Garges, PA; 2) Diane Klingelhofer, MD;

4) Julie & Em Williams, PA

LATE JUNIOR EWE LAMB – 1) & 2) Tayler Garges, PA; 3) Diane Klingelhofer, MD;

4) Eva Garges, PA

PAIR OF JUNIOR EWE LAMBS – 1) Tayler Garges, PA; 2) Diane Klingelhofer, MD

CHAMPION EWE – Tayler Garges, PA
RESERVE CHAMPION EWE – Diane Klingelhofer, MD

PAIR OF LAMBS, ANY AGE – 1) Tayler Garges, PA; 2) Diane Klingelhofer, MD

PEN OF 4 LAMBS – 1) Tayler Garges, PA; 2) Diane Klingelhofer, MD

EXHIBITORS YOUNG FLOCK – 1) Tayler Garges, PA; 2) Diane Klingelhofer, MD

FLOCK – 1) Tayler Garges, PA; 2) Diane Klingelhofer, MD

Diane Klingelhofer, MD

THE LINCOLN LETTER WILL BE PUBLISHED THREE TIMES A YEAR.

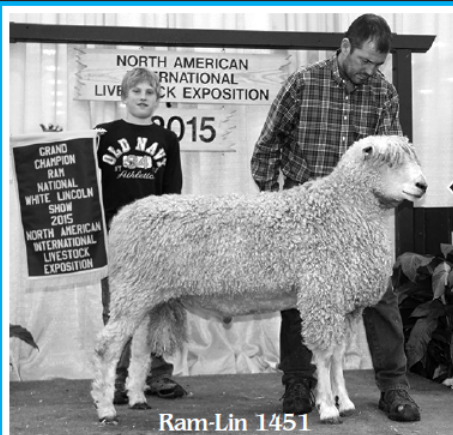
IT IS A COMPILATION OF SUBMISSIONS FROM MEMBERS. WE VALUE YOUR CONTRIBUTIONS.

THE SUBMISSION DEADLINE FOR THE NEXT ISSUE IS JANURAY 15. PLEASE SEND YOUR NEWS TO TIFFANY DEAKIN AT TDEAKIN93@GMAIL.COM.

RAM-LIN ACRES

Thanks for the Memories! 4 Years • 21 Shows • 240 Classes Won

We wish to announce the private treaty sale of our entire flock!



We built our ewe families by buying a stud, keeping his best son and breeding him to his half-sisters. It worked for us!

Another proud accomplishment...

CHAMPION NATURAL COLORED LINCOLN EWE
2012 NAILE

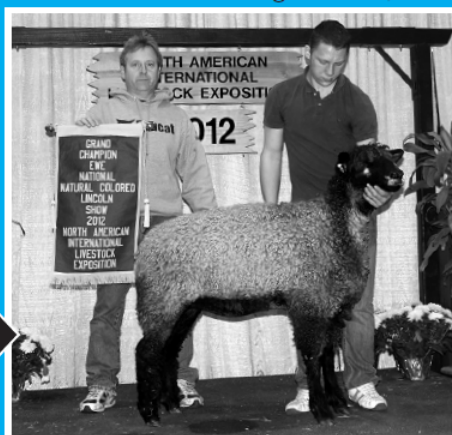
Thanks to all our buyers, good friends and members of our family for your support & help!

Our 62 head of ewes, lambs, and ram lambs sold to buyers from Kansas, Iowa, Minnesota, Illinois, Wisconsin and Ohio!

One of our proud accomplishments...

GRAND CHAMPION RAM
2015 NAILE

We started in 1992 with 5 yearling ewes from Bill Gardhouse. We never bought another female!



Lloyd & Phyllis Burgener • 18081 Schauer Lane

Richland Center, WI 53581 • 608/604-3580 • ramlinacres@gmail.com

KRISTIE

LINCOLNS • NATURAL COLORED LINCOLNS

Practical, Profitable Genetics That Perform

2nd Place Natural Colored Lincoln Yearling Ram

2016 NAILE

He was Supreme Ram 2 out of 4 times shown!



CONGRATULATIONS!

To Christine Cole, of Sisters, OR, on your Supreme Champion Wool Breeds Ewe at the Deschutes County Fair with this "Sparkle" daughter!

Add Kristie Lincolns to your flock and watch them work for you!

**We also focus
on fiber!
Both White
and Colored
Lincoln fleeces
available!**



**A big thanks
to our buyers!**

**Wes Scripps, CO
Mindy Reid, MO
Christine Cole, OR**

Kris & Hannah Jones • D.R. Taylor

246 NE McKay Drive • Prineville, OR 97754 • 541/416-1461 • 541/280-4175

Email: ktjones@crestviewcable.com

Find us on Facebook at Kristie Lincolns

2017 EASTERN STATES EXPOSITION & NORTHEAST REGIONAL LINCOLN SHOW

SEPTEMBER 23, 2017
WEST SPRINGFIELD, MA

White Lincoln –

YEARLING RAM – 1) 264# & 2) 247# Beverly Boersma, Murphysboro, IL; 3) 250# Deborah Vanderwende, Greenwood, DE; 4) Jonathan Kruse, Effingham, IL

SENIOR RAM LAMB – 1) 150# Beverly Boersma, Murphysboro, IL

SENIOR CHAMPION RAM – Beverly Boersma, Murphysboro, IL (Yearling Ram)

RESERVE SENIOR CHAMPION RAM – Beverly Boersma, Murphysboro, IL (Yearling Ram)

INTERMEDIATE RAM LAMB – 1) 179# Beverly Boersma, Murphysboro, IL; 2) 167# & 3) 163# Deborah Vanderwende, Greenwood, DE; 4) Tayler Garges, Telford, PA; 5) Jonathan Kruse, Effingham, IL

JUNIOR RAM LAMB – 1) 181# & 2) 171# Beverly Boersma, Murphysboro, IL;

3) 148# & 4) Jonathan Kruse, Effingham, IL; 5) Tayler Garges, Telford, PA

PAIR OF RAM LAMBS – 1) Beverly Boersma, Murphysboro, IL; 2) Deborah Vanderwende, Greenwood, DE; 3) Jonathan Kruse, Effingham, IL; 4) Tayler Garges, Telford, PA; 5) Wendy Cameron, Middleboro, MA

JUNIOR CHAMPION RAM – Beverly Boersma, Murphysboro, IL (Junior Ram Lamb)

RESERVE JUNIOR CHAMPION RAM – Beverly Boersma, Murphysboro, IL (Junior Ram Lamb)

GRAND CHAMPION RAM – Beverly Boersma, Murphysboro, IL (Yearling Ram)

RESERVE GRAND CHAMPION RAM – Beverly Boersma, Murphysboro, IL (Junior Ram Lamb)

BEST HEADED RAM – Deborah Vanderwende, Greenwood, DE

YEARLING EWE CLASS 1 – 1) 260# & 4) Deborah Vanderwende, Greenwood, DE; 2) 200# Jonathan Kruse, Effingham, IL; 3) 199# Beverly Boersma, Murphysboro, IL; 5) Tayler Garges, Telford, PA

YEARLING EWE CLASS 2 – 1) 235# Beverly Boersma, Murphysboro, IL; 2) 200# Jonathan Kruse, Effingham, IL; 3) 218# Tayler Garges, Telford, PA; 4) Lydia Smith, Charlotte, VT; 5) Wendy Cameron, Middleboro, MA

PAIR OF YEARLING EWES – 1) Beverly Boersma, Murphysboro, IL; 2) Deborah Vanderwende, Greenwood, DE; 3) Jonathan Kruse,

Effingham, IL; 4) Tayler Garges, Telford, PA; 5) Robin Meek, Harmony, RI

SENIOR EWE LAMB – 1) 150# Beverly Boersma, Murphysboro, IL; 2) 130# Jonathan Kruse, Effingham, IL

SENIOR CHAMPION EWE – Beverly Boersma, Murphysboro, IL (Senior Ewe Lamb)

RESERVE SENIOR CHAMPION EWE – Beverly Boersma, Murphysboro, IL (Yearling Ewe Class 2)

Continued on page 22

2017 NEW JERSEY STATE FAIR

AUGUST 4 – 13, 2017
AUGUSTA, NJ

YEARLING RAM – 1) Wind Valley Farm, Oakham, MA; 2) Jacob Leary, Oakham, MA

JUNIOR RAM LAMB – 1) & 2) Wind Valley Farm, Oakham, MA

PAIR OF RAM LAMBS – 1) Wind Valley Farm, Oakham, MA

CHAMPION RAM – Wind Valley Farm, Oakham, MA

RESERVE CHAMPION RAM – Wind Valley Farm, Oakham, MA

YEARLING EWE – 1) & 2) Jacob Leary, Oakham, MA; 3) & 4) Wind Valley Farm, Oakham, MA

PAIR OF YEARLING EWES – 1) Jacob Leary, Oakham, MA; 2) Wind Valley Farm, Oakham, MA

SENIOR EWE LAMB – 1) & 2) Wind Valley Farm, Oakham, MA

JUNIOR EWE LAMBS – 1) & 2) Wind Valley Farm, Oakham, MA; 3) & 4) Jacob Leary, Oakham, MA

PAIR OF EWE LAMBS – 1) Wind Valley Farm, Oakham, MA; 2) Jacob Leary, Oakham, MA

CHAMPION EWE – Wind Valley Farm, Oakham, MA

RESERVE CHAMPION EWE – Wind Valley Farm, Oakham, MA

FLOCK, BRED & OWNED – 1) Wind Valley Farm, Oakham, MA

EXHIBITOR FLOCK – 1) Wind Valley Farm, Oakham, MA; 2) Jacob Leary, Oakham, MA

GET OF SIRE, 4 ANIMALS – 1) Wind Valley Farm, Oakham, MA



North Valley Farm

White & Natural Colored Lincoln Sheep

12775 NW Oak Ridge Rd • Yamhill, OR 97148
503/332-3105 • christiane@northvalleyfarm.com

WIND VALLEY FARM



Wind Valley 1709

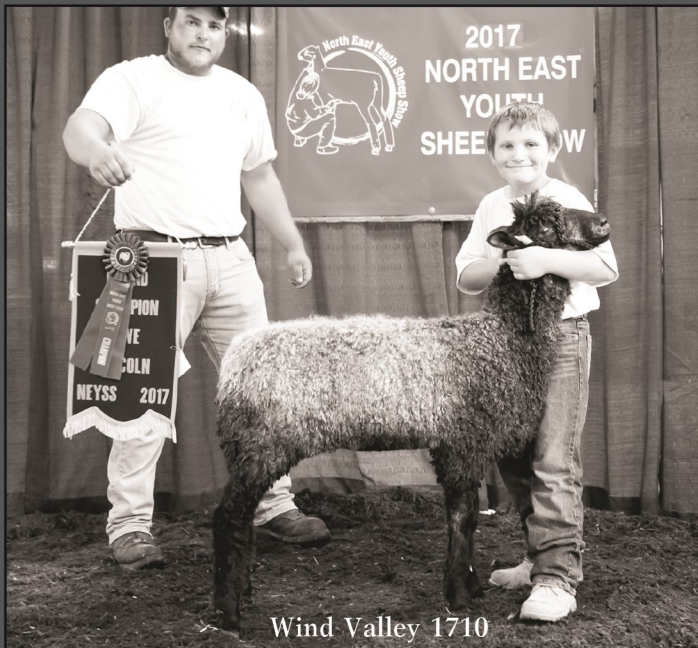
Supreme Champion Fleece
New Jersey State Fair
Out of JAS30, Grand Champion Ewe at the
Big E 2015

*Our Lincolns work in the
showring and on the farm!*



Wind Valley 1603

Grand Champion Ram
Eastern States Exposition
& New Jersey State Fair



Wind Valley 1710

CONGRATULATIONS
To Peter Priest!
Grand Champion Ewe

Northeast Youth Sheep Show
twin to the ewe above!

CONGRATULATIONS
To Lena Berry

with Wind Valley 1708
Supreme Colored Ewe & Fleece
at the Delaware State Fair!

Thanks to our other buyers, Joe &
Judy Miller, ME, & Taylor Meek, RI

*Give us a call today for
all your Lincoln needs!*

DARLENE LEARY
508/868-2646

2123 Old Turnpike Road
Oakham, MA 01068

BRYAN MASON
508/868-7106

2017 EASTERN STATES EXPOSITION & NORTHEAST REGIONAL LINCOLN SHOW

SEPTEMBER 23, 2017
WEST SPRINGFIELD, MA

Continued from page 20

INTERMEDIATE EWE LAMB – 1) 150# & 3) 129# Beverly Boersma, Murphysboro, IL; 2) 161# Deborah Vanderwende, Greenwood, DE; 4) Jonathan Kruse, Effingham, IL; 5) Tayler Garges, Telford, PA

JUNIOR EWE LAMB – 1) 141# Jonathan Kruse, Effingham, IL; 2) 157# & 3) 143# Beverly Boersma, Murphysboro, IL; 4) Tayler Garges, Telford, PA; 5) Deborah Vanderwende, Greenwood, DE

PAIR OF EWE LAMBS – 1) Beverly Boersma, Murphysboro, IL; 2) Jonathan Kruse, Effingham, IL; 3) Tayler Garges, Telford, PA; 4) Deborah Vanderwende, Greenwood, DE; 5) Kathy Bombria, Columbia, CT

JUNIOR CHAMPION EWE – Beverly Boersma, Murphysboro, IL (Intermediate Ewe Lamb)

RESERVE JUNIOR CHAMPION EWE – Jonathan Kruse, Effingham, IL (Junior Ewe Lamb)

GRAND CHAMPION EWE – Beverly Boersma, Murphysboro, IL (Senior Ewe Lamb)

RESERVE GRAND CHAMPION EWE – Beverly Boersma, Murphysboro, IL (Intermediate Ewe Lamb)

BEST HEADED EWE – Jonathan Kruse, Effingham, IL

EXHIBITOR'S FLOCK – 1) Beverly Boersma, Murphysboro, IL; 2) Jonathan Kruse, Effingham, IL; 3) Deborah Vanderwende, Greenwood, DE; 4) Tayler Garges, Telford, PA

BREEDER'S FLOCK – 1) Beverly Boersma, Murphysboro, IL; 2) Jonathan Kruse, Effingham, IL; 3) Deborah Vanderwende, Greenwood, DE; 4) Tayler Garges, Telford, PA

GET OF SIRE – 1) Beverly Boersma, Murphysboro, IL; 2) Deborah Vanderwende, Greenwood, DE; 3) Jonathan Kruse, Effingham, IL; 4) Wendy Cameron, Middleboro, MA

BEST FLEECE – Lydia Smith, Charlotte, VT

PREMIER EXHIBITOR – Beverly Boersma, Murphysboro, IL

PREMIER BREEDER – Beverly Boersma, Murphysboro, IL

Colored Lincoln –

YEARLING RAM – 1) 270# Wind Valley Farm, Oakham, MA; 2) 270# Jakob Leary, Oakham, MA; 3) 253# Deborah Vanderwende, Greenwood, DE; 4) Katie Bombria, Columbia, CT; 5) Zachary Lyman, Dracut, MA

SENIOR RAM LAMB – 1) 179# Christina Weston, Hancock, NH

SENIOR CHAMPION RAM – Wind Valley Farm, Oakham, MA (Yearling Ram)

RESERVE SENIOR CHAMPION RAM – Jakob Leary, Oakham, MA (Yearling Ram)

INTERMEDIATE RAM LAMB – 1) 143# & 2) 143# Deborah Vanderwende, Greenwood, DE

JUNIOR RAM LAMB CLASS 1 – 1) 196# & 5) Annabelle Kruse, Effingham, IL;

2) 136# & 4) Wind Valley Farm, Oakham, MA; 3) 149# Christina Weston, Hancock, NH

JUNIOR RAM LAMB CLASS 2 – 1) 176# & 4) Carol & Joe Haddock, Jericho, VT; 2) 142# & 3) 111# Terence Blake, Ludlow, MA; 5) Ryan Cameron, Middleboro, MA

PAIR OF RAM LAMBS – 1) Terence Blake, Ludlow, MA; 2) Wind Valley Farm, Oakham, MA; 3) Annabelle Kruse, Effingham, IL; 4) Deborah Vanderwende, Greenwood, DE; 5) Christina Weston, Hancock, NH

JUNIOR CHAMPION RAM – Annabelle Kruse, Effingham, IL (Junior Ram Lamb Class 1)

RESERVE JUNIOR CHAMPION RAM – Wind Valley Farm, Oakham, MA (Junior Ram Lamb Class 1)

CHAMPION RAM – Wind Valley Farm, Oakham, MA (Yearling Ram)

RESERVE CHAMPION RAM – Annabelle Kruse, Effingham, IL (Junior Ram Lamb Class 1)

BEST HEADED RAM – Christina Weston, Hancock, NH

YEARLING EWE CLASS 1 – 1) 222# Christina Weston, Hancock, NH; 2) 215# Wind Valley Farm, Oakham, MA; 3) 200# & 4) Deborah Vanderwende, Greenwood, DE; 5) Jakob Leary, Oakham, MA

YEARLING EWE CLASS 2 – 1) 210# & 2) 193# Annabelle Kruse, Effingham, IL; 3) 193# & 4) Taylor Meek, Harmony, RI; 5) Wind Valley Farm, Oakham, MA

PAIR OF YEARLING EWES – 1) Annabelle Kruse, Effingham, IL; 2) Deborah Vanderwende, Greenwood, DE; 3) Taylor Meek, Harmony, RI; 4) Wind Valley

NEED TO CONTACT ASSOCIATED REGISTRY?

P.O. Box 231
WAMEGO, KS 66547
P: 785/456-8500
F: 785/456-8599
ASREGISTRY@GMAIL.COM

A BIG THANK YOU to the following sponsors for our 2017 Northeast Regional Show:

White Grand & Reserve Champions, Ewe & Ram -
Locust Grove Farm, DE and Wool Hollow Farm, VT

Natural Colored Grand & Reserve Champions, Ewe
& Ram - Locust Grove Farm, DE and Wool Hollow
Farm, VT

White & Natural Colored Premier Exhibitor &
Breeder Banners - Bally Duff Farm, the Meek
Family, RI

White & Natural Colored Best Headed - Lawthea
Farm, the Cameron Family, MA

Farm, Oakham, MA; 5) Christina Weston, Hancock, NH

SENIOR EWE LAMBS – 1) 130# & 2) 115# Wind Valley Farm, Oakham, MA

SENIOR CHAMPION EWE – Annabelle Kruse, Effingham, IL (Yearling Ewe Class 2)

RESERVE SENIOR CHAMPION EWE – Christina Weston, Hancock, NH (Yearling Ewe Class 1)

INTERMEDIATE EWE LAMB – 1) 151# & 2) 141# Deborah Vanderwende, Greenwood, DE; 3) 122# Adrianna Alejandro, Rindge, NJ; 4) Annabelle Kruse, Effingham, IL; 5) Wind Valley Farm, Oakham, MA

JUNIOR EWE LAMB CLASS 1 – 1) 150# & 2) 113# Annabelle Kruse, Effingham, IL; 3) 118# Jakob Leary, Oakham, MA; 4) Wind Valley Farm, Oakham, MA; 5) Peter Priest, Ludlow, MA

JUNIOR EWE LAMB CLASS 2 – 1) 121# Wind Valley Farm, Oakham, MA; 2) 117# Terence Blake, Ludlow, MA; 3) 112# Christina Weston, Hancock, NH; 4) Carol &

Joe Haddock, Jericho, VT; 5) Deborah Vanderwende, Greenwood, DE

PAIR OF EWE LAMBS – 1) Annabelle Kruse, Effingham, IL; 2) Wind Valley Farm, Oakham, MA; 3) Deborah Vanderwende, Greenwood, DE; 4) Jakob Leary, Oakham, MA; 5) Lena Berry, Wyoming, DE

JUNIOR CHAMPION EWE – Annabelle Kruse, Effingham, IL (Junior Ewe Lamb Class 1)

RESERVE JUNIOR CHAMPION EWE – Wind Valley Farm, Oakham, MA (Junior Ewe Lamb Class 2)

GRAND CHAMPION EWE – Annabelle Kruse, Effingham, IL (Yearling Ewe Class 2)

RESERVE GRAND CHAMPION EWE – Christina Weston, Hancock, NH (Yearling Ewe Class 1)

BEST HEADED EWE – Jakob Leary, Oakham, MA

EXHIBITOR'S FLOCK – 1) Annabelle Kruse, Effingham, IL; 2) Wind Valley Farm, Oakham, MA; 3) Deborah

Vanderwende, Greenwood, DE; 4) Jakob Leary, Oakham, MA; 5) Christina Weston, Hancock, NH

BREEDER'S FLOCK – 1) Wind Valley Farm, Oakham, MA; 2) Deborah Vanderwende, Greenwood, DE; 3) Christina Weston, Hancock, NH; 4) Taylor Meek, Harmony, RI

GET OF SIRE – 1) Wind Valley Farm, Oakham, MA; 2) Deborah Vanderwende, Greenwood, DE; 3) Christina Weston, Hancock, NH; 4) Taylor Meek, Harmony, RI; 5) Terence Blake, Ludlow, MA

PREMIER EXHIBITOR – Wind Valley Farm, Oakham, MA

PREMIER BREEDER – Wind Valley Farm, Oakham, MA

SUPREME CHAMPION EWE OVER ALL BREEDS:
BEVERLY BOERSMA,
MURPHYSBORO, IL
(WHITE LINCOLN)

HAMMER

White & Natural Colored Lincolns

"Breeding Consistent Quality From Years Of Experience!"



**BEST FLEECE LINCOLN RAM
2013 NAILE**

We are proud to be named to the
WISCONSIN SHEEP BREEDERS
Hall of Fame

David & Kay Hammer

6738 Hilldale Road • Cuba City, WI 53807

608-759-4304 • 608-778-5104

davidhammer@centurytel.net

A BRIEF HISTORY OF THE LINCOLN BREEDERS ASSOCIATION

A society of Lincoln breeders was started in England in 1796 and the present Lincoln Longwool Sheep Breeders' Association was founded in 1892.

In the United States, the National Lincoln Sheep Breeders' Association (NLSBA) as started in Michigan in 1891. By 1900, the membership consisted of approximately 150 members of which one-third were Canadian. Registration of colored Lincolns in the U.S. began in 1984.

The registry maintained by the American association is open for offspring of animals recorded in Lincoln breeders' registries from other countries. For example, animals that have qualified for registration and are recorded in the Canadian Livestock Records can be transferred and recorded in the American registry.

Lincoln Longwool judging guidelines, reflecting desirable characteristics of the breed, were updated in 1993. The registry and generation of registration papers were computerized in



1997 to offer a standard three-generation pedigree (with a five generation option) and to identify the fleece color phenotype as "white" or "colored".

During odd numbered years, at a central location, the NLSBA holds a biennial meeting, white and colored sheep and wool shows, breeding sale, and election of officers and directors. Officers include president, vice president, secretary-treasurer and director regions including eastern, mid-eastern, western and one at large. In alternating locations throughout the U.S. on even numbered years, the association holds a membership meeting, shows and sale. Youth activities are conducted nationwide.



LINCOLN LONGWOOLS FOR MANY REASONS!

- Long lustrous fleece • Muscular, sturdy body
- Attentive mothers • Environmentally adaptable
- Good milk production • Calm, gentle disposition
- Multiple births • Long productive lives
- Outstanding crossbreeding
- Strong, long lasting teeth • Excellent feet, rot resistant
- Genetically no scrapie

National Lincoln Sheep Breeders Assoc.
PO Box 231, 305 Lincoln
Wamego, KS 66547

Visit the Lincoln Association Website for updates and information

www.lincolnsheep.org